

asecos®



BEDIENUNGSANLEITUNG

Sicherheitsschränke V-LINE

USER MANUAL

Safety storage cabinets V-LINE

GEbruIKSAANWIJZING

Brandveiligheidsopslagkasten V-LINE

NOTICE D'UTILISATION

Amoires de sécurité d'après V-LINE

MANUAL DE INSTRUCCIONES

Armarios de seguridad V-LINE

ISTRUZIONI PER L'USO

Armadi di sicurezza V-LINE

INSTRUÇÕES DE SERVIÇO

Armários de segurança V-LINE



10 JAHRE GARANTIE*

* Bei jährlicher Beauftragung des **Premium Tarifs** verlängert sich die Garantie für Ihren V-LINE Sicherheitsschrank auf bis zu 10 Jahre.

10 YEARS WARRANTY*

* Upon conclusion of an asecos service and maintenance agreement (**PREMIUM tariff**), you will get a warranty extension for up to 10 years for your V-LINE safety storage cabinet.

Weitere Informationen zu unseren Garantieleistungen finden Sie unter www.asecos.com/service-leistungen

For detailed information about our warranties please visit www.asecos.com/service-conditions

DE

EN

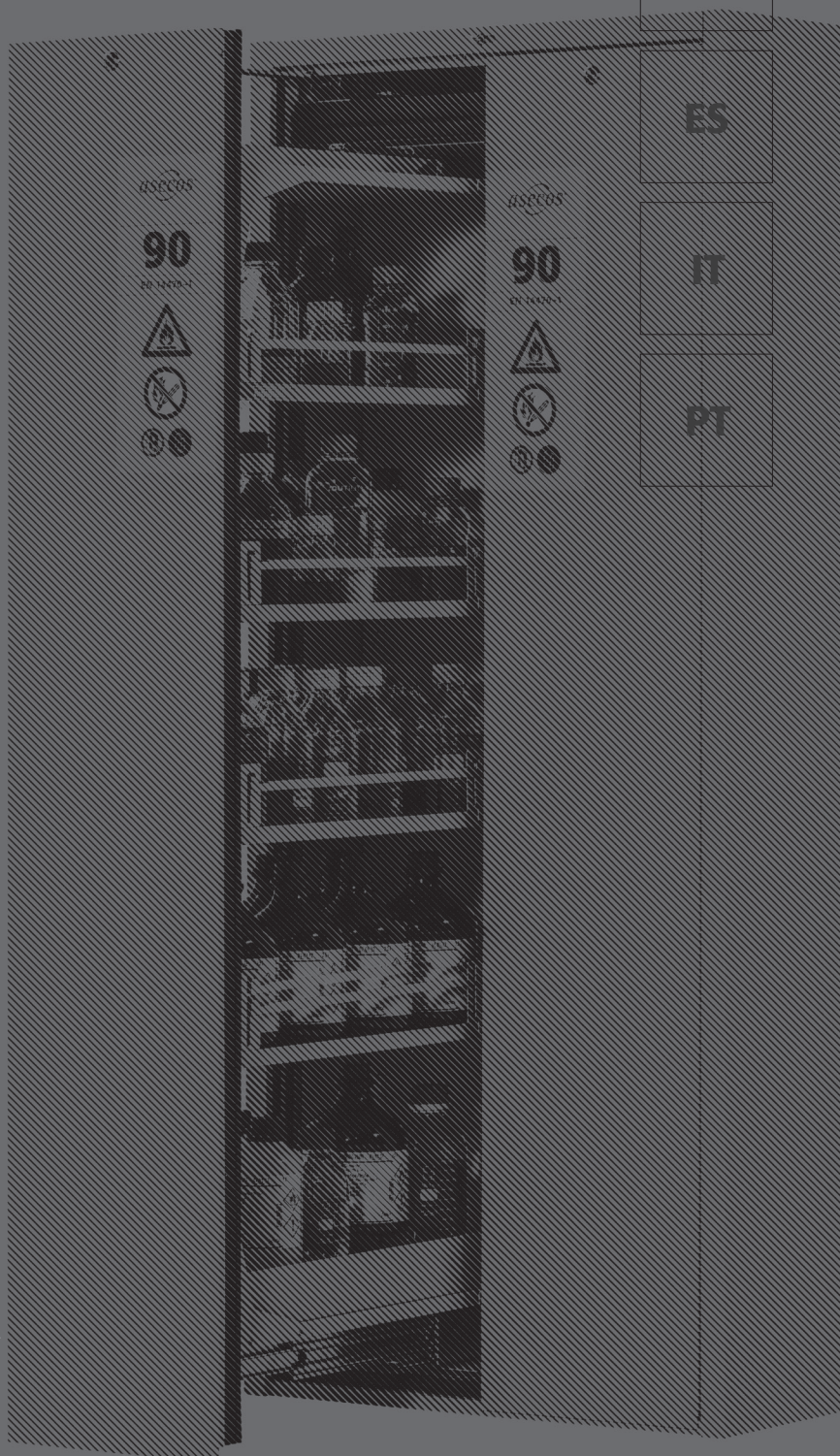
NL

FR

ES

IT

PT





V-MOVE-90

V90.196.045.VDAC:0012

V90.196.081.VDAC:0012

V90.196.045.VDAC:0013

V90.196.081.VDAC:0013





asecos GmbH
Abt. Kundendienst
Weiherfeldsiedlung 16-18
D-63584 Gründau
Fax: +49 60 51 – 92 20-10

IHRE PERSÖNLICHE DOKUMENTATION ZUM asecos-SICHERHEITSSCHRANK

Sehr geehrte Kundin, sehr geehrter Kunde,

mit dem Kauf Ihres asecos-Sicherheitschranks haben Sie eine entscheidende Investition für die Sicherheit in Ihrem Haus getätigt. Vor Ihnen steht ein innovatives Produkt aus hochwertigen Materialien, das höchste Qualität garantiert.

Sicherheitschränke aus dem Hause asecos verfügen über eine lückenlose Zulassungs-Dokumentation. Wir archivieren Ihre Zulassungsdokumente jedes einzelnen Schrankes für Sie, bis Sie diese im Bedarfsfall (z. B. einer Betriebsbegehung o. ä.) mit diesem Formular von uns anfordern.

Dazu einfach dieses Formular heraustrennen/kopieren und mit Ihrer Adresse und der Seriennummer des Schrankes versehen per Fax zurück an uns.

Mit freundlichen Grüßen

asecos GmbH

YOUR PERSONAL DOCUMENTATION TO THE asecos SAFETY CABINET

Dear Customer,

you have made a decisive investment in safety for your company by purchasing this asecos safety storage cabinet. You now own an innovative product made of top-quality materials guaranteeing the highest quality standards.

asecos safety storage cabinets have complete authorisation documents. We archive the authorisation documents for every individual cabinet, keeping them ready for you should you ever need them (e.g. for a works inspection or similar). Simply request them using this form.

Tear off or copy that page and return to us by fax with your address and serial number of the cabinet on it.

Yours sincerely

asecos GmbH

Firma • company	
Abteilung • department	
Name • name	
Straße • street	
PLZ • postal code	
Ort • city	
Schrank • cabinet Seriennummer(n) • serial number(s)	

OPERATING INSTRUCTIONS

Dear customer,

Thank you very much for purchasing a safety storage cabinet from our company, with which you have made a decisive investment in the safety within your company. Our safety storage cabinets make the storage of hazardous materials at the workplace safe and convenient for you.

Please read these operating instructions very carefully. Get to know the advantages and simple operability of our safety storage cabinets in detail. This simplifies the daily handling of hazardous materials for you.

Many thanks.
Your asecos team

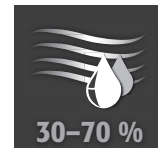
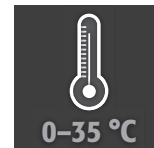
1. NOTES ▪ GUIDELINES ▪ GUARANTEE	5
1.1. General safety notes	5
1.2. Guarantee	5
1.3. Cabinet Details	5
2. TRANSPORT	6
2.1. Tilting the cabinet.	6
2.2. Dismantling of the transport packaging	6
2.3. In-plant transport	7
3. ERECTION ▪ COMMISSIONING ▪ FUNCTION	7
3.1. Commissioning	7
3.2. Connection to the power supply	7
3.3. Alignment Of The Cabinets	7
3.4. locking of the cabinet	8
3.5. Unlocking of the cabinet	8
3.6. Automatic door closing system (TSA)	9
3.7. disable the automatic door closing system	9
4. SAFETY FUNCTIONS	10
4.1. Closing the drawer during blackout	10
4.2. Automatic closing in the event of fire	10
4.3. Blocking the drawer while opening	10
4.4. Blocking the drawer while closing	11
5. SURCHARGE (TOP-MOUNTED CABINET)	12
5.1. Assembly of the attached cabinet	12
6. INTERIOR FITTINGS	13
6.1. bottom Collecting Sump	13
6.2. Shelves (Height-Adjustable)	13
6.3. Shelf guard rail system	13
7. STORAGE	14
8. EARTHING	14
9. VENTILATION	15
10. FIRE ▪ DISPOSAL	15
10.1. Opening The Cabinet After The Fire	15
10.2. Disposal	15
11. SAFETY CHECKS	16
11.1. In general	16
11.2. Battery check	16

1. NOTES - GUIDELINES - GUARANTEE

1.1. GENERAL SAFETY NOTES

- Observe applicable statutes and regulations, and the notes in these operating instructions, when handling hazardous materials
- Work on the electrical system is to be carried out only with the power turned off and only by qualified electricians – refer here to the regulations of the local electricity supply company.
- The on-site installation conditions are to be observed (e.g. bolting the cabinets to the building).
- The instructions of the supervisory engineering department must be followed.
- Observe accident prevention regulations and workplace ordinance
- Ensure that the necessary safety checks are only carried out by authorised staff using original spare parts
- Only use the cabinet after having been properly instructed; access is to be forbidden to unauthorised persons.
- The pivoting area of the doors is to be kept free at all times; doors/drawers are to be kept closed
- By assigning trained/authorised technical personnel you can prevent the malfunctions, damage and corrosion damage that result from inappropriate transport.
- Observe the upper limits for stored quantities, loading etc.
- Containers with a volume larger than that of the bottom collecting sump may not be placed inside the cabinet; spilt hazardous materials are to be collected immediately and removed
- Vessels containing aggressive chemicals (acids/alkalis) are to be kept in special cabinets for acids and alkalis or on shelves for acids and alkalis as well as in cabinets with metal-free interior equipment.
- Before storing such materials, check that the cabinet's surface is resistant to the chemicals.
- Before the initial commissioning, the safety storage cabinet is to be examined by the user for possible damage.

Set-up requirements



1.2. GUARANTEE

The guarantee for this product is agreed between you (the customer) and your dealer (the seller). As the manufacturer, asecos guarantees the products listed in the operating instructions for a period of 24 months from the date of delivery. All model safety equipment are subject to a compulsory annual inspection by specialised staff authorised by the manufacturer. Otherwise the customer's guarantee claim against the manufacturer expires.

1.3. CABINET DETAILS

A complete overview of the models can be found at the start of the operating instructions.

Development: asecos GmbH Sicherheit und Umweltschutz, D-63584 Gründau.

Cabinet data: Logbook (included with the cabinet)

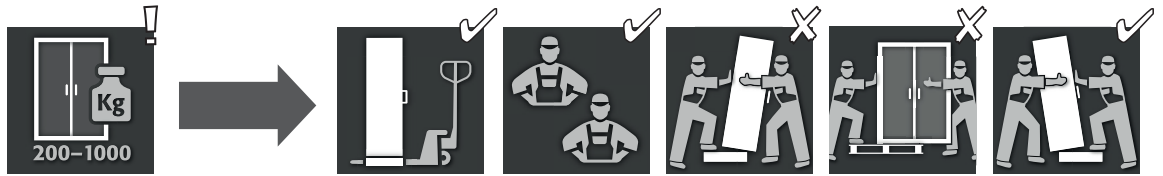
Technical drawing: Appendix 1

Technical data: Table in Appendix 2

V-LINE

These models are tested, certified and marked according to requirements of BS EN 14470-1. They are intended for the storage of flammable liquids in work rooms in accordance with the valid national regulations.

2. TRANSPORT



CAUTION:

Transport the cabinet in an upright position on a pallet truck, tied and secured against slipping, until the final place of installation is reached. The transport locks in the door joints may only be removed directly at the place of installation! Inappropriate transport can lead to concealed damage to the fire protection insulation! We can only guarantee the necessary quality if the cabinet is transported to the place of its use by our specially trained staff.



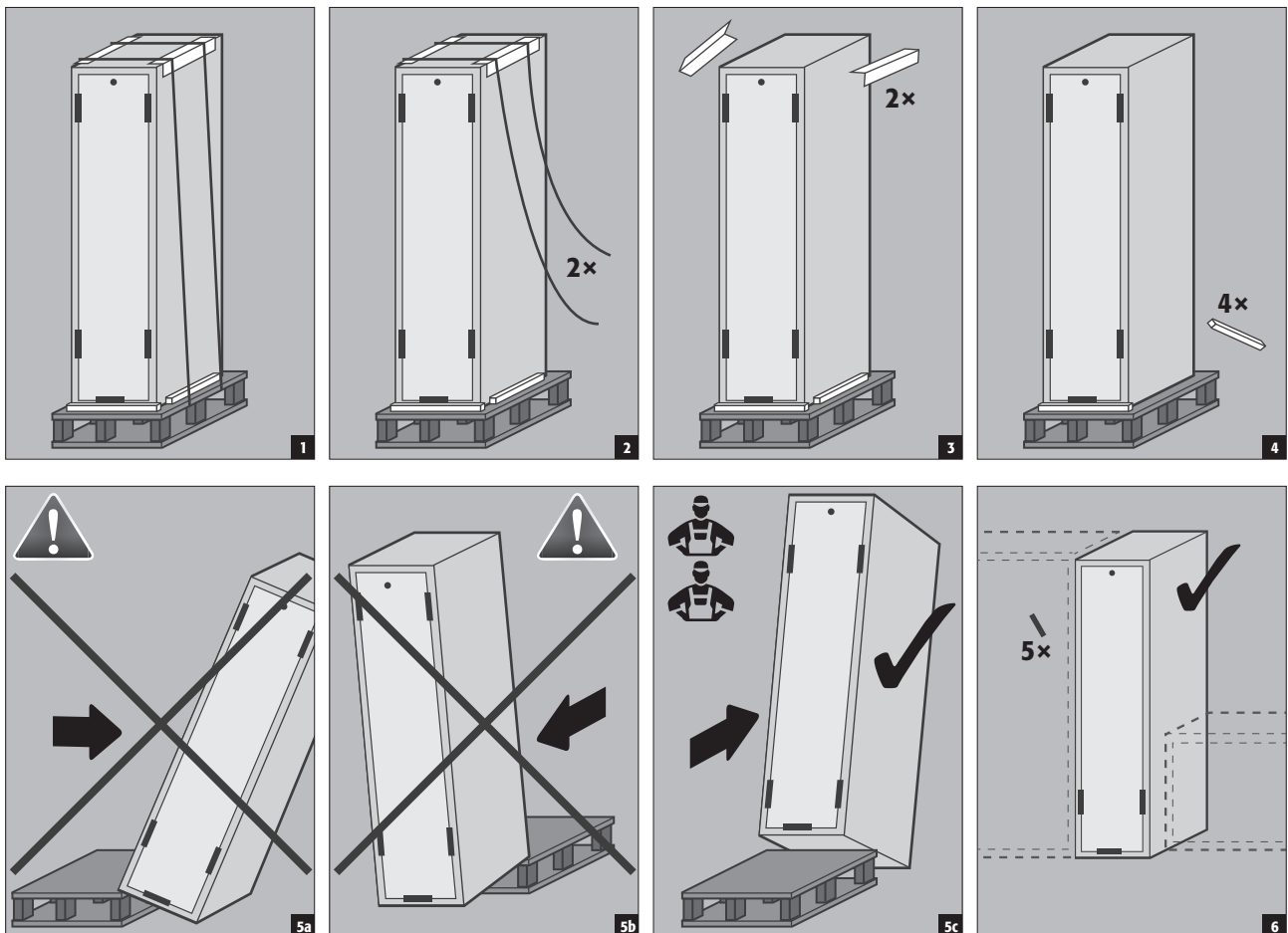
CAUTION:

The cabinet must not be moved by pulling the opened drawer! Pulling or sliding may only be carried out in the body housing!

2.1. TILTING THE CABINET



2.2. DISMANTLING OF THE TRANSPORT PACKAGING

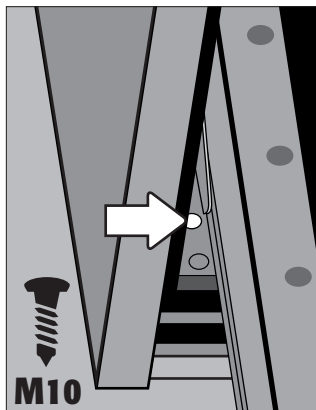


2.3. IN-PLANT TRANSPORT



CAUTION:

The cabinet must not be moved by pulling the opened drawer! Pulling or sliding may only be carried out in the body housing!



Steps for manoeuvring the cabinet:

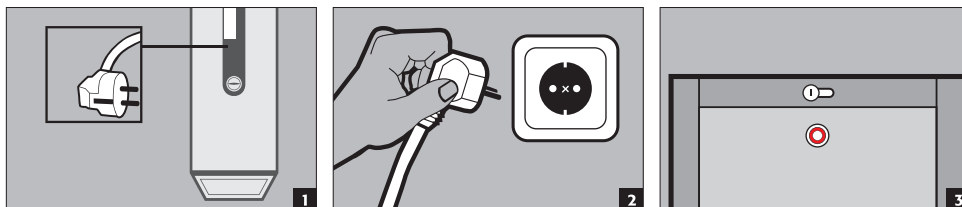
- Open the drawer of the cabinet
- Connect the belts with steel angles or steel rings using a screw M10
- Screw the steel angles/rings into the threaded insert in the base of the cabinet
- Move the cabinet carefully using the belts

3. ERECTION - COMMISSIONING - FUNCTION

3.1. COMMISSIONING

- Before putting into operation for the first time, the user must carry out an examination of the safety storage cabinet for possible damage, such as defective or loose sealing elements, correct alignment and perfect functioning of the door elements.
Use the cabinet and accessories only if they are in an orderly condition.

3.2. CONNECTION TO THE POWER SUPPLY



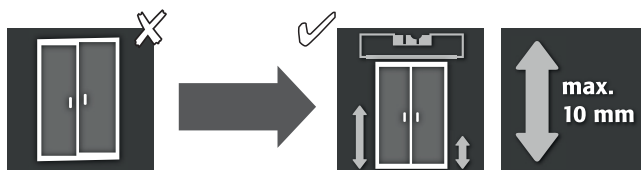
CAUTION

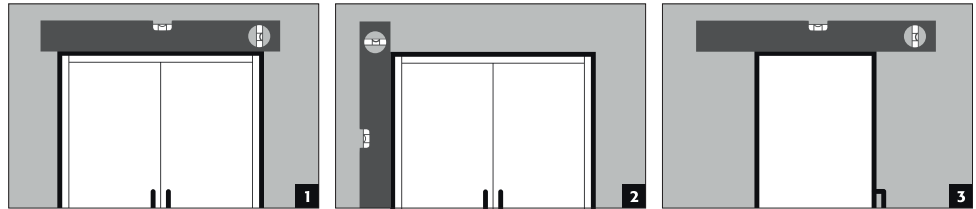
The cabinet must be connected to the power supply at least 1 hour before storing items for the first time!

3.3. ALIGNMENT OF THE CABINETS

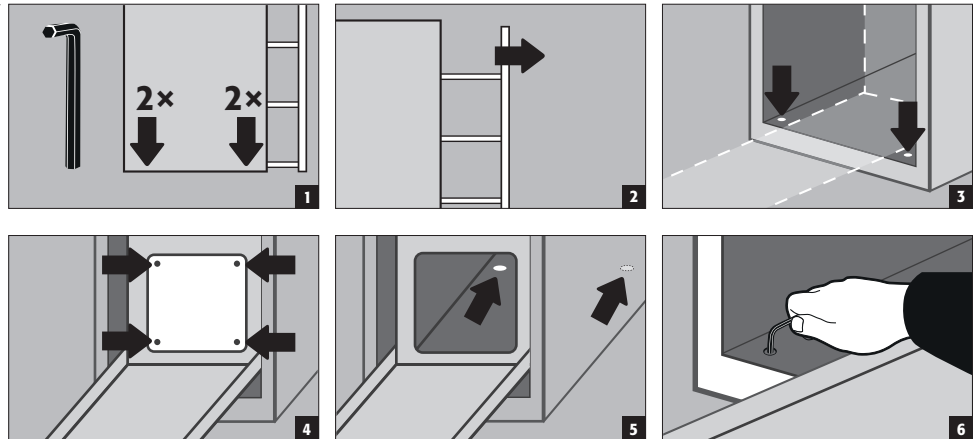


After disabling the automatic door closing (see 4.4) and opening the drawer, the cabinet can be aligned using the integrated adjusting aids.

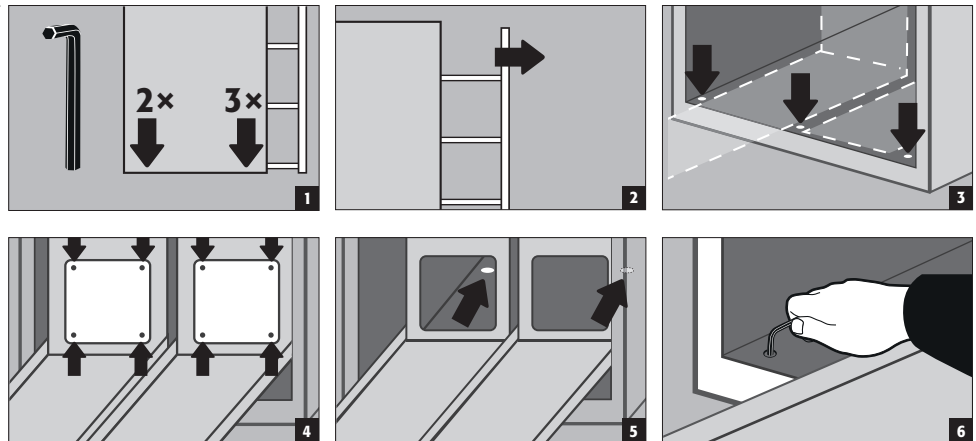




V90.196.045.VDAC



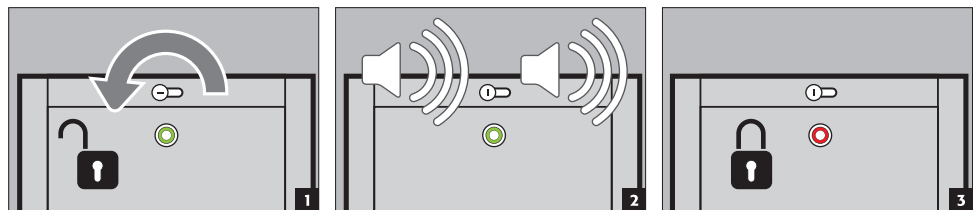
V90.196.081.VDAC



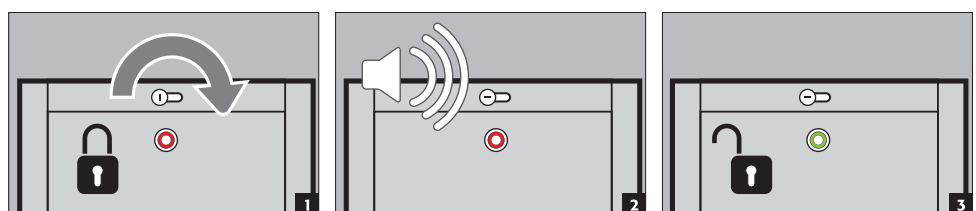
NOTES to figures 4 and 5

Only one vertical drawer can be opened at a time while the other one remains closed.

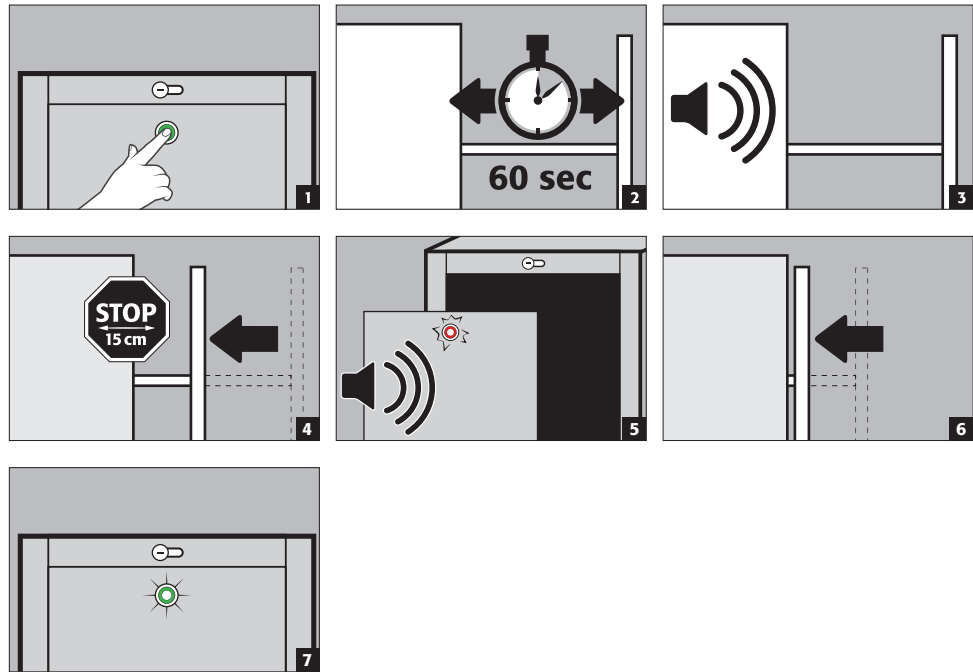
3.4. LOCKING OF THE CABINET



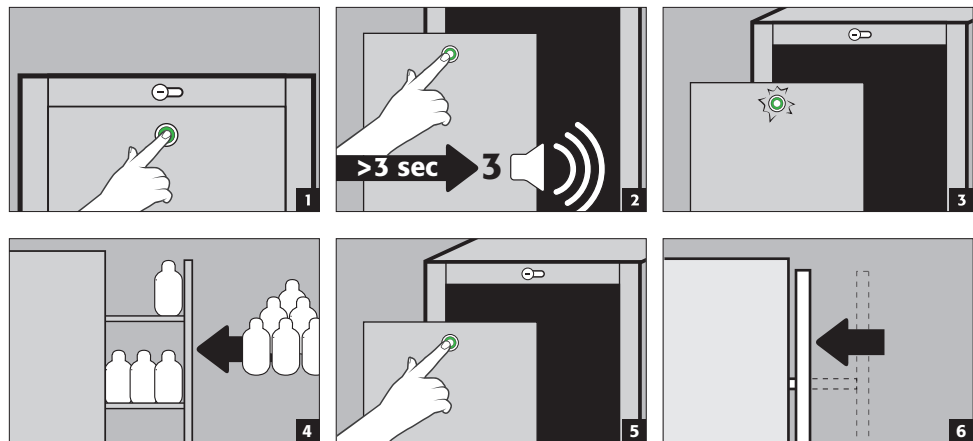
3.5. UNLOCKING OF THE CABINET



3.6. AUTOMATIC DOOR CLOSING SYSTEM (TSA)



3.7. DISABLE THE AUTOMATIC DOOR CLOSING SYSTEM



ATTENTION:
In case of fire the automatic door closing is always ensured!

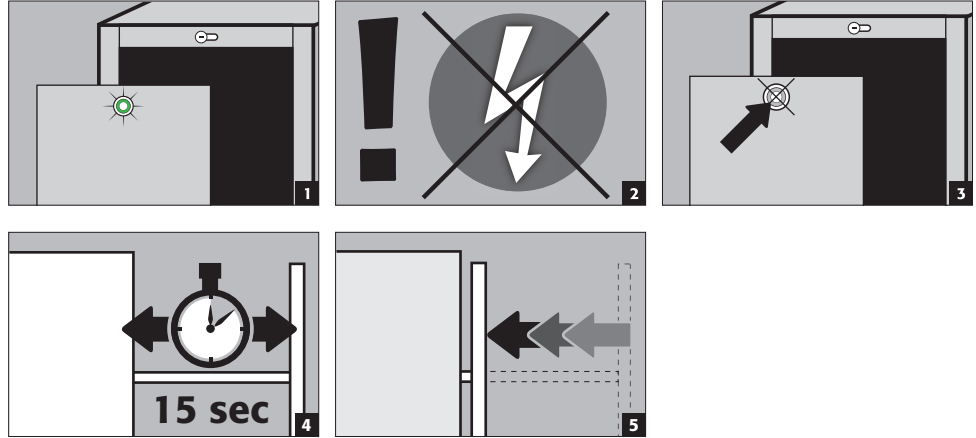
4. SAFETY FUNCTIONS

4.1. CLOSING THE DRAWER DURING BLACKOUT

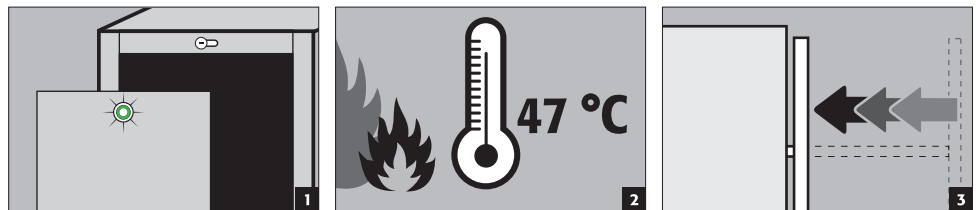


CAUTION:

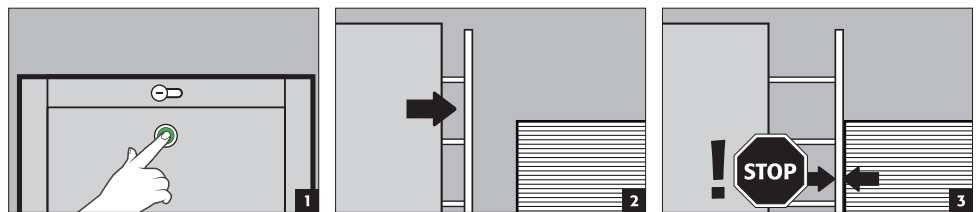
During a blackout the opened drawer will close automatically using an integrated battery. Please note, it only has power **for one** closing routine.



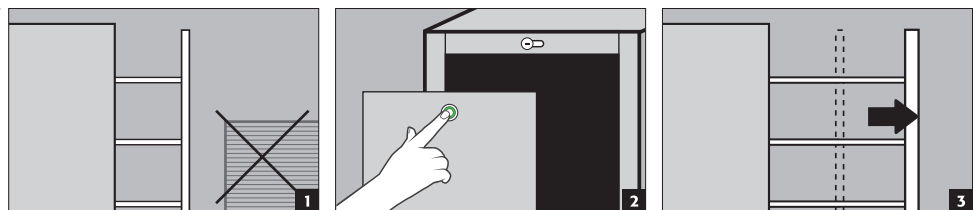
4.2. AUTOMATIC CLOSING IN THE EVENT OF FIRE



4.3. BLOCKING THE DRAWER WHILE OPENING



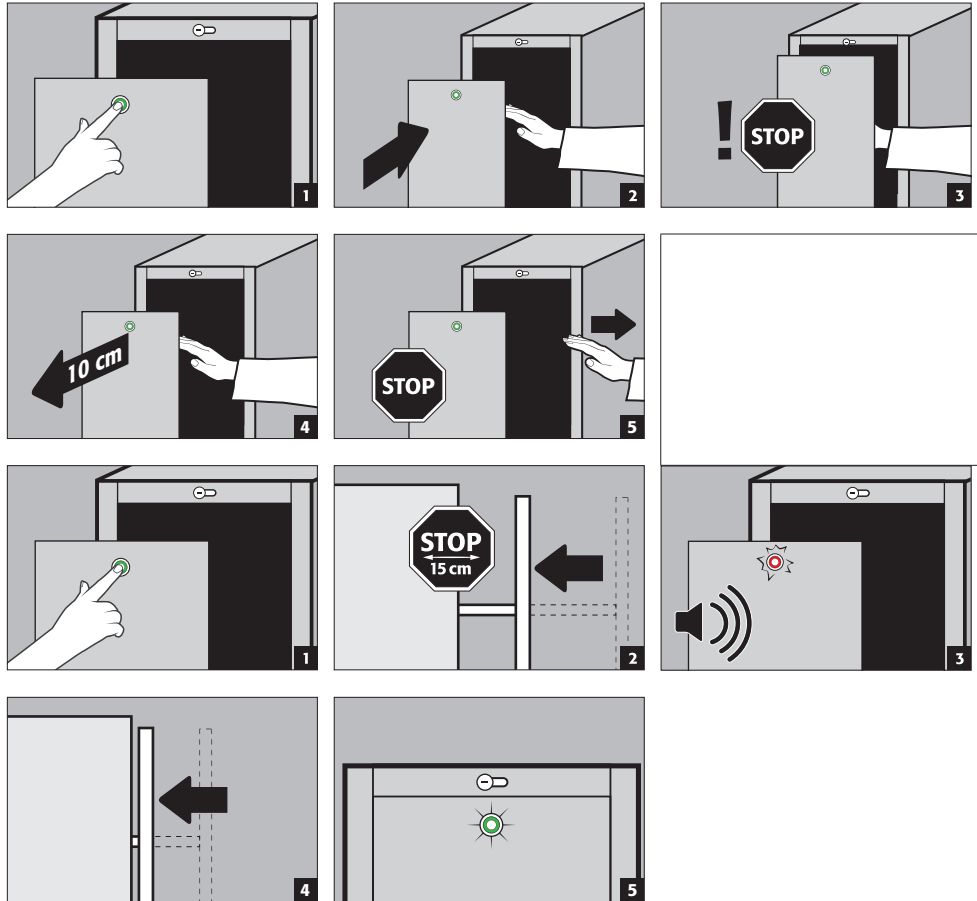
Release blockage



CAUTION

If no direct user intervention occurs after the blockage, the cabinet will give an acoustic and visual alarm after 20 seconds. In that case, please remove the blockade and follow the previous steps!

4.4. BLOCKING THE DRAWER WHILE COSING



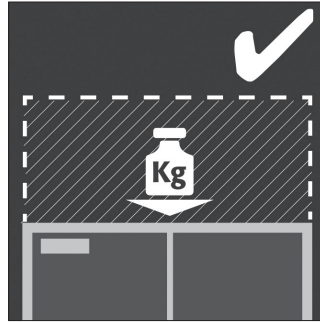
Release blockage



CAUTION

If no direct user intervention occurs after the blockage, the cabinet will give an acoustic and visual alarm after 20 seconds. In that case, please remove the blockage and follow the previous steps!

5. SURCHARGE (TOP-MOUNTED CABINET)



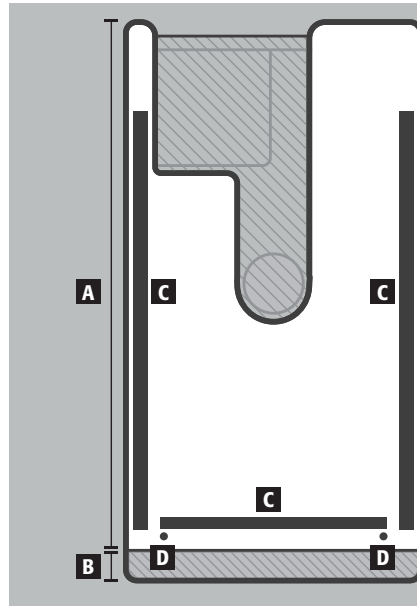
The V-LINE safety storage cabinets can be loaded if the cabinet was ordered with article HF.L.32864 (order no. 38275). These cabinets are then structurally adjusted at the factory and additionally marked on the outside as load-bearing.

A head section rear

B head section front

C magnetic tape

D fixation points for screw M6



CAUTION:
Only the fixation points [D] shown in the drawing must be used!

Other fixation points or fixation types (e.g. silicone) are not permitted!

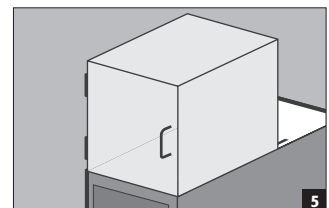
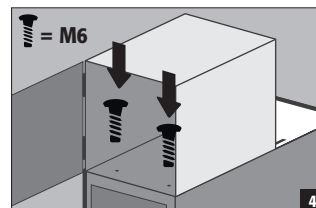
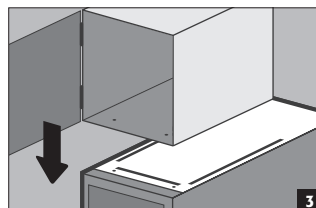
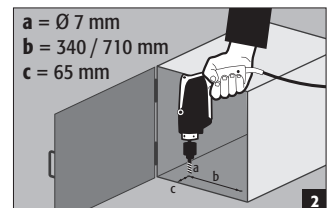
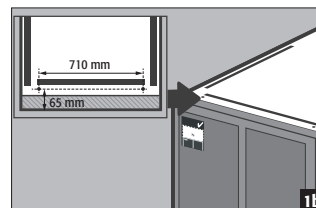
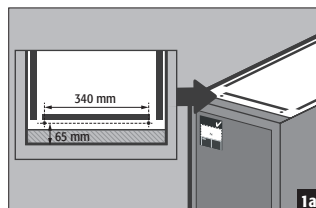
- The magnetic tape mounted on the headboard serves as a support surface for the top cabinet and can be cut to size if required.



CAUTION:

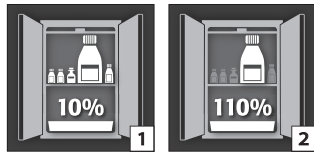
The magnetic tape may only be attached to the rear head section!

5.1. ASSEMBLY OF THE ATTACHED CABINET



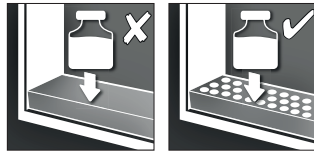
6. INTERIOR FITTINGS

6.1. BOTTOM COLLECTING SUMP



According to EN 14470-1: A spill containment sump must be installed below the lowest storage level. The spill containment sump must be able to hold a minimum volume of 10 % of all the containers stored in the cabinet [1] or at least 110 % of the volume of the largest single container [2], whichever of these volumes is larger.

Use as a storage surface in case of cabinets with several storage levels:

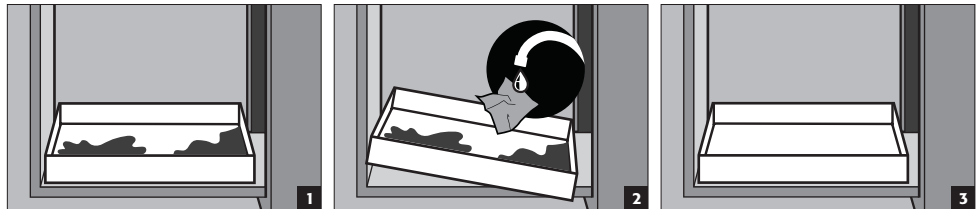


CAUTION:

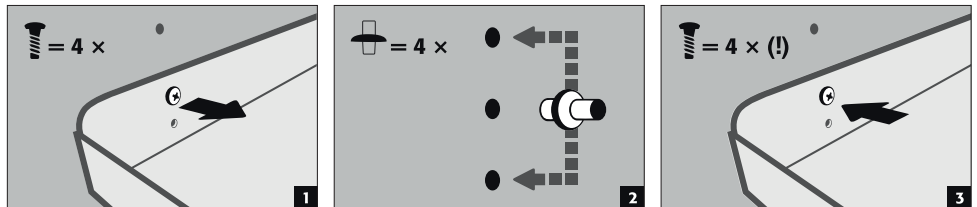
Use as a storage surface is possible only in conjunction with a perforated metal plate insert.

Leaks:

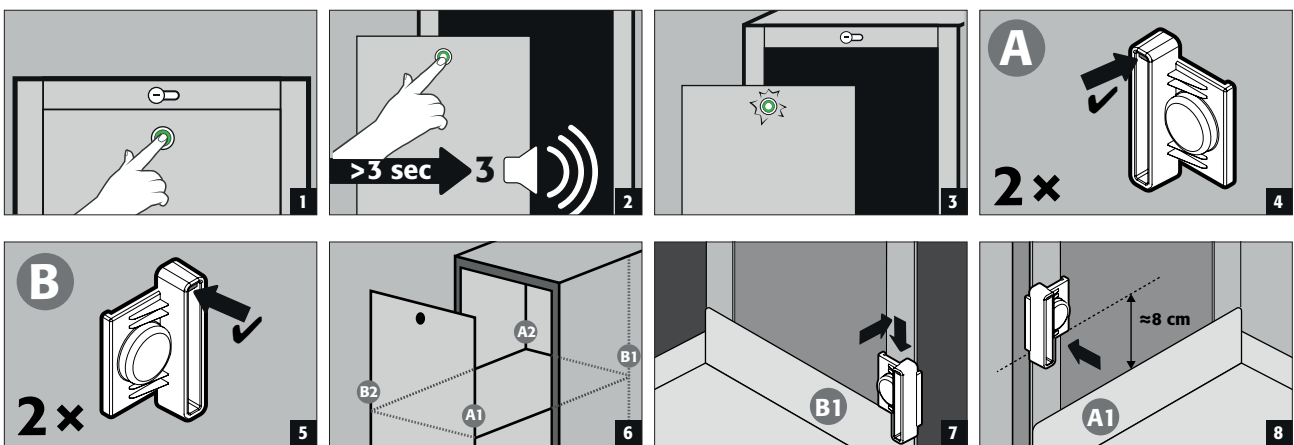
- Liquid in the sump is to be collected using suitable means.

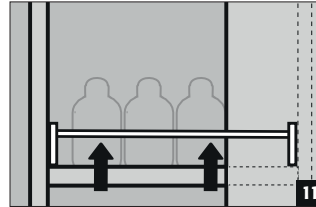
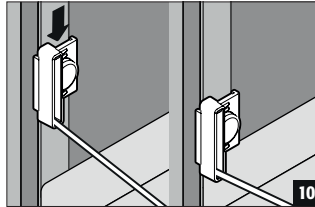
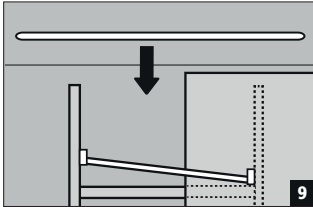


6.2. SHELVES (HEIGHT-ADJUSTABLE)



6.3. SHELF GUARD RAIL SYSTEM





B2 A2
 To install the second safe guard rail system on the opposite side, follow the steps from point 6 again. Pay attention to the correct use of the required brackets.

7. STORAGE

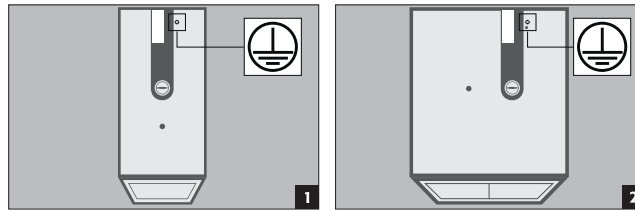
- Vessels containing aggressive chemicals (acids and alkalis) are to be kept in special cabinets for acids and alkalis or on shelves for acids and alkalis as well as in safety storage cabinets with metal-free interior equipment.
- The storage of corrosive liquids can affect the function of the shut-off equipment for the air supply and exhaust.
- Each container placed inside reduces the minimum containment volume in relation to the total stored quantity.



Applicable for all models: Depending on the type class of the cabinet, observe the respective valid national regulations!

8. EARTHING

- An earth connection may be necessary, depending on the customer-specific use of the safety storage cabinet. The decision regarding this is taken on the basis of a risk analysis by the customer.



Earthing when decanting:

Connection to a potential equalisation system is compulsory in this case. Cabinets in which decanting can be performed should additionally be equipped with an earth terminal in the interior (at a surcharge on enquiry) which must be connected to the decanting containers. This is standard with cabinets from the UB-LINE with drawers.



The spare parts required for the connection are not part of the scope of supply.

9. VENTILATION



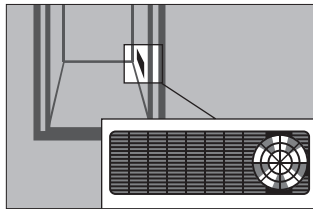
CAUTION

The fire protection valves near the supply and extraction air connections are safety and maintenance-relevant components.

In order to check the correct operation or to replace a defective element, please ensure that flexible connecting hoses or sliding pieces are used to connect to an extraction system in order to ensure simple dismounting and re-mounting of the extraction air connection.

- All models can be connected to a technical exhaust system via the exhaust connector. Please see the respectively applicable national regulations for the specified air recirculation rate, maximum pressure losses and exhaust air ducts.
- If installed on an exhaust system, a check must be carried out to ensure proper connection to the system (e.g. using a smoke tube)

Ventilation wheel for technical ventilation



- The ventilation wheel serves as an indicator for correct ventilation. If the wheel turns, the necessary 10-fold air recirculation rate is exceeded.



CAUTION:

In general these models can be operated without technical ventilation. The direct environment of the cabinet can be an explosive zone in this case. If the cabinet is to be operated without an exhaust connection, the user must attach a marking to it.

10. FIRE - DISPOSAL

10.1. OPENING THE CABINET AFTER THE FIRE



CAUTION:

Depending upon the duration of the fire an ignitable vapour/air mixture may have formed; therefore remove all sources of ignition within a 10 metre radius of the cabinet before opening it.

- use only spark-free tools
- open the cabinets with extreme caution

10.2. DISPOSAL



The models can be disposed of once they have been dismantled and the materials sorted.

11. SAFETY CHECKS

11.1. IN GENERAL

As safety equipment the cabinets have to be checked for safety at least once per year. The next checking date can be taken from the check sticker on the outside of the door. This annual check can be carried out with the necessary care, and for securing your warranty claims in the case of fire, only by an authorised asecos employee (refer also to our service brochure regarding this).

In addition, we recommend that you carry out a daily and monthly functional check:

Daily functional check

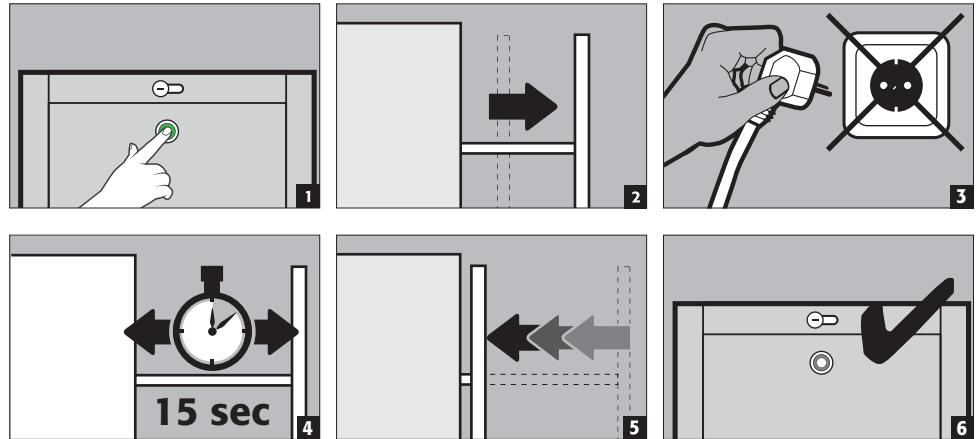
- applies to the spill containment sumps (collect and remove any leakages)

Monthly functional check

- perfect function of the drawers
- correct seating and condition of the fire protection seals

11.2. BATTERY CHECK

- Every six months after the maintenance check the battery should be checked by the user of the cabinet.



ATTENTION

The rechargeable battery is considered a wearing part which has to be replaced every 3 years. If this is not done in the course of an asecos service measure, this must be done by the customer.

In case of damage please contact your dealer in order to have the cabinet repaired using original spare parts. The cabinets can be cleaned with a mild household cleaner and a soft cloth.



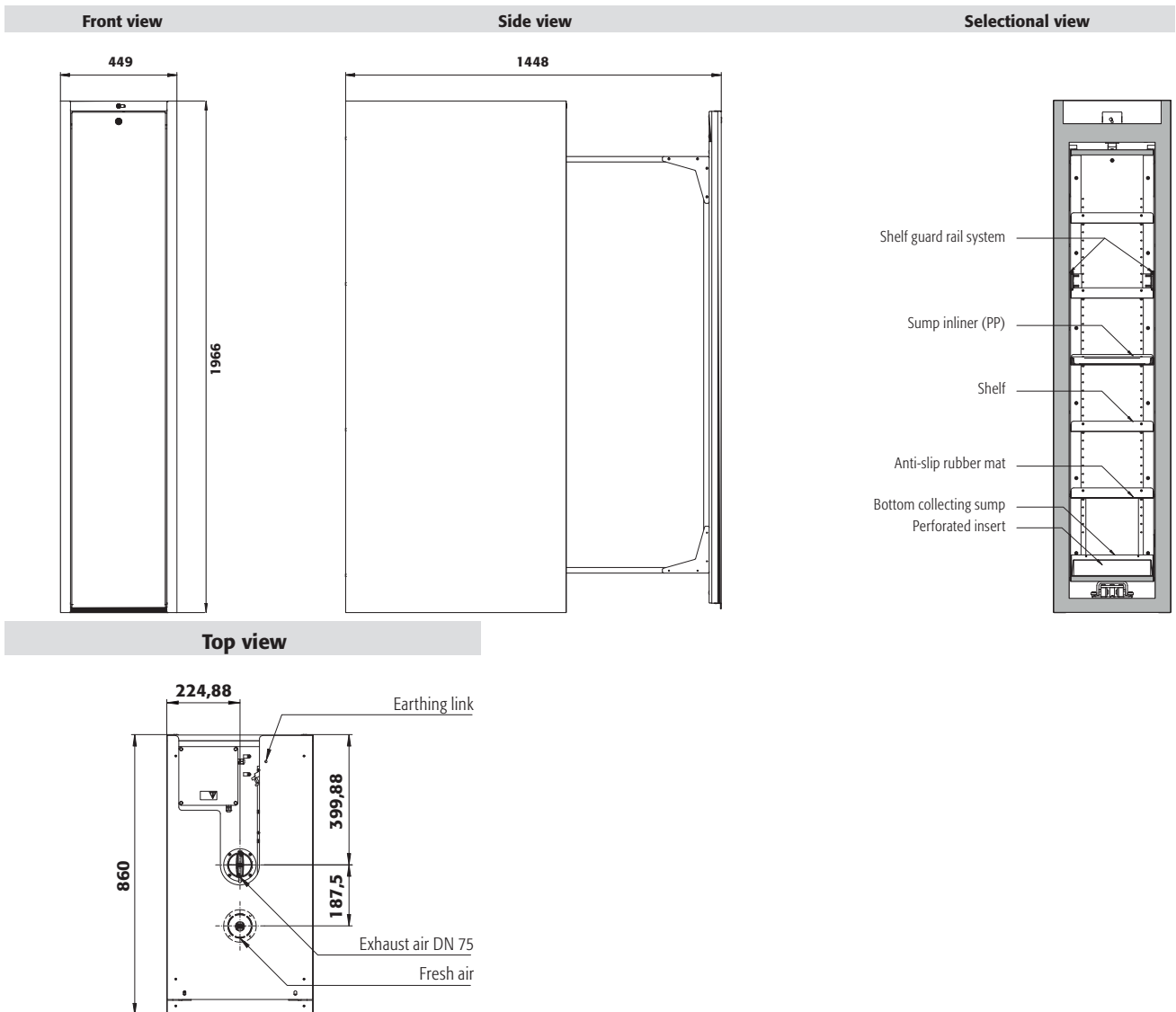
CONTACT:

In the case of defects or complaints about our products (within and also after the warranty period), and for requesting safety checks or taking out a service contract, please contact our service hotline on: Tel: +44 1785 22 70-90 info@asecos.co.uk

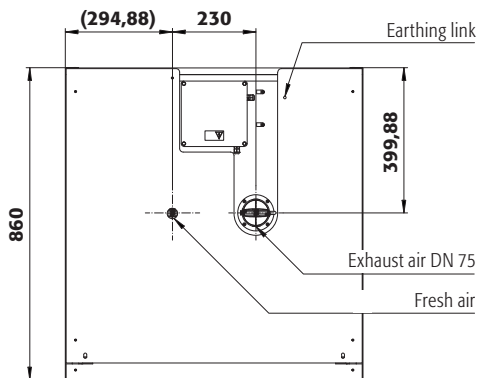
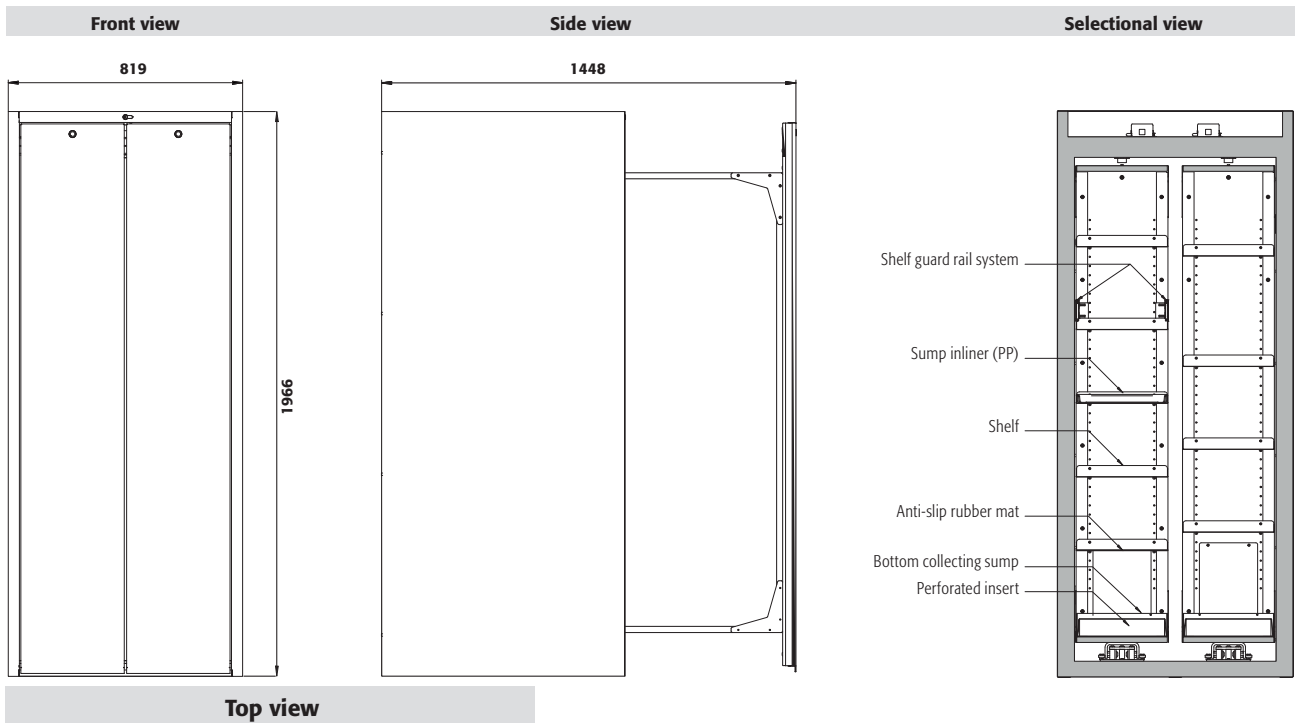
1. TECHNICAL DATA

In general		V90.196.045.VDAC	V90.196.081.VDAC
Type		90	90
External dimensions W x D x H	mm	449 x 860 x 1966	819 x 860 x 1966
Internal dimensions W x D x H	mm	331 x 775 x 1750	701 x 775 x 1750
Weight without interior equip.	kg	344	500
Distributed load	kg/m ²	580.00	512.00
Extraction air	DN	75	75
Air change 10 times	m ³ /h	5	9
Diff. pressure (air change 10 times)	Pa	5	5
Diff. pressure (air change 10 times EK5/AK4)	Pa	5	5
Power consump. in operation	W	50	50
Power consump. in standby mode	W	0,5	0,5
Max. current consumption	A	0,5	0,5
Nominal voltage	V	85-265	85-265
Frequency	Hz	50/60	50/60
Characteristics of each vertical drawer			
Maximum load vertical drawer	kg	140	140
Max. shelf load (evenly distributed)	kg	50.00	50.00
Capacity bottom collecting sump	litres	12.50	12.50
Volume massimo del contenitore	litres	11.36	11.36
Max. storage capacity	litres	125.00	125.00

1.1. V90.196.045.VDAC:0012 / V90.196.045.VDAC:0013



1.2. V90.196.081.VDAC:0012 / V90.196.081.VDAC:0013



asecos GmbH
Abt. Kundendienst
Weiherfeldsiedlung 16-18
D-63584 Gründau
Fax: +49 60 51 – 92 20-10

www.asecos.com

Ihr Fachhändler:

Your partner:

Uw partner:

Votre partenaire :

Su distribuidor:

su richiesta: